

Land | Available

LISTING #16891



MIDDLEBROOK WEST COMMERCIAL

HIGHWAY G14/CUMMING AVE. | CUMMING, IA 50061



0.99 ACRES M/L

KEATON DREHER
Cell: 515.650.1276
IA LIC S62338000
Keaton@PeoplesCompany.com

KALEN LUDWIG
Cell: 515.402.3169
IA LIC S55791000
Kalen@PeoplesCompany.com

WARREN COUNTY, IA

PROPERTY DESCRIPTION

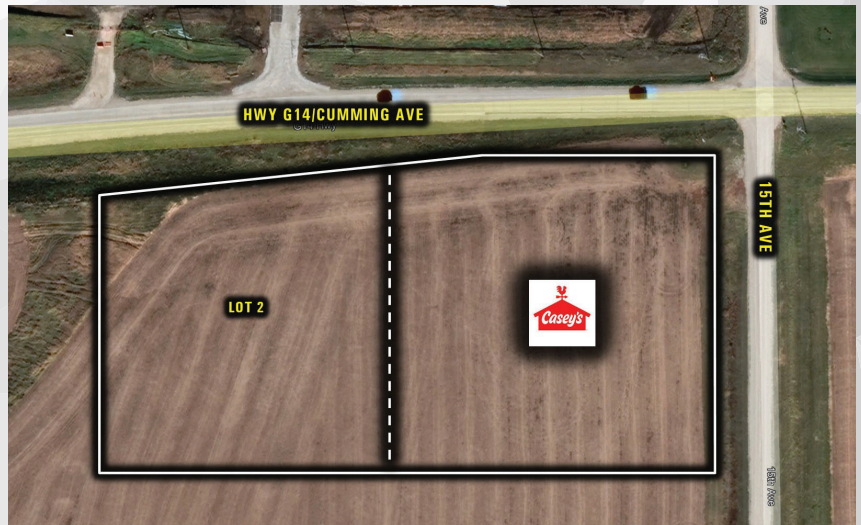
One acre of commercial land for sale just south of Highway G14/Cumming Ave. and east of Interstate 35 (27,600 vehicles per day) in Cumming, Iowa. Full access road constructed off Highway G14/Cumming Ave. with cross access easement for access off South 15th St. Interstate 35 access and visibility, directly located across from the new Hy-Vee Distribution Center. The property is zoned C-1 Highway Commercial. City water and sewer are available. Contact the Listing Agent for more details.

DIRECTIONS

Follow I-35 S to Co. Rd G14/Cumming Ave. Take exit 65 for Cumming Ave. and head east toward Norwalk. The property is located on the south side of Highway G14/Cumming Ave directly across from the Hy-Vee Distribution Center.

IMPROVEMENTS

- Full access road constructed off Highway G14/Cumming Ave. with cross access easement for access off South 15th St.
- City water and sewer available.



KEATON DREHER

Cell: 515.650.1276
IA LIC S62338000
Keaton@PeoplesCompany.com

KALEN LUDWIG

Cell: 515.402.3169
IA LIC S55791000
Kalen@PeoplesCompany.com