



# For Lease

1400 Chatham Ave. | Norwalk, Iowa 50211

**Up to ± 10,265 RSF Commercial Space Available in Hughes Century Crossing**

## Property details

<b>Availability:</b>	1,568 – 10,265 RSF (can be subdivided)
<b>Lease rate:</b>	\$27.50 - \$29.50
<b>Total building size:</b>	13,290 RSF
<b>Location:</b>	Quick access to I-35 via Hwy 5 extension with easy access to Downtown Des Moines, located in a fast-growing retail corridor within Hughes Century Crossing
<b>Property information:</b>	<ul style="list-style-type: none"><li>• Multi-tenant building suitable for office or retail</li><li>• Located adjacent to multiple single-family and multi-family housing developments, &amp; retail, commercial, and hospitality</li></ul>

### About Hughes Century Crossing

Proposed retail, office, medical and/or commercial use adjacent to the brand-new Gregg Young Auto Sports Complex at Norwalk Central.

The sports complex includes 20 acres of turf fields and an indoor recreation center with basketball courts. The development will also become the new home of Norwalk Parks and Recreation.

---

### Aaron Hyde

Senior Vice President

JLL Des Moines

+1 515 953 8834

[aaron.hyde@jll.com](mailto:aaron.hyde@jll.com)

### Justin Lossner, CCIM, SIOR

Senior Managing Director

JLL Des Moines

+1 515 371 0846

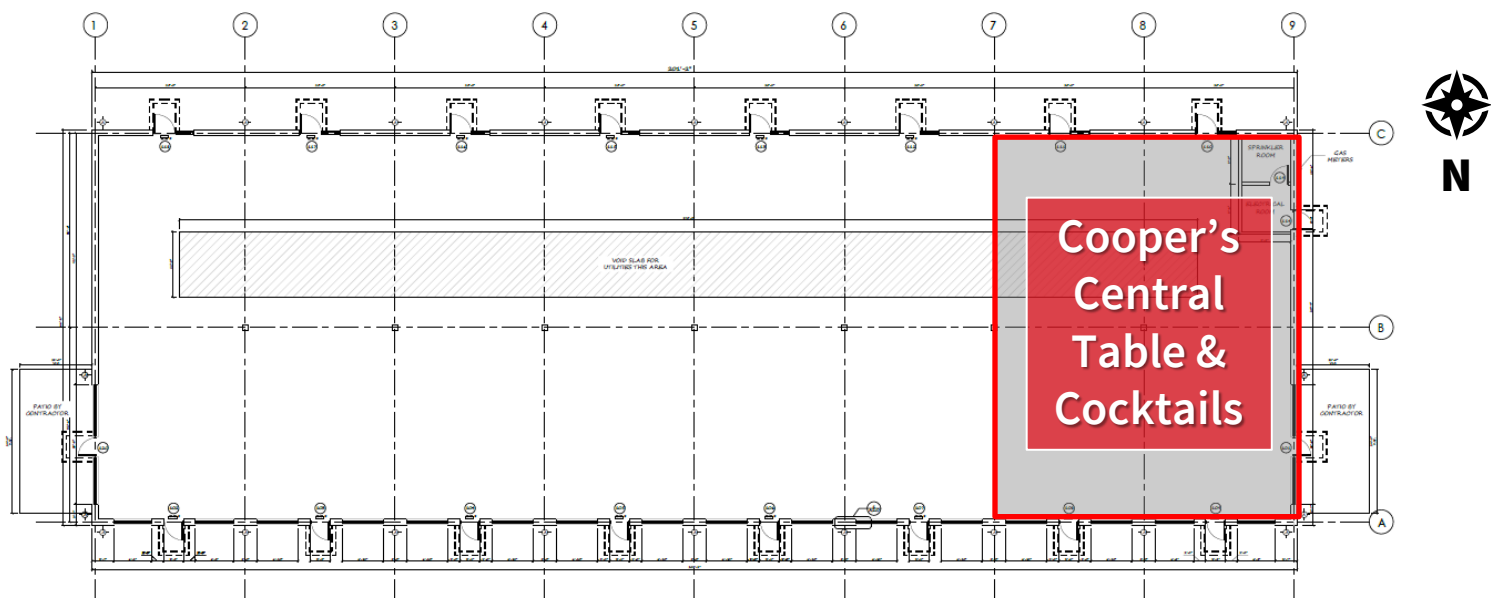
[justin.lossner@jll.com](mailto:justin.lossner@jll.com)

---

[jll.com/des-moines](http://jll.com/des-moines)



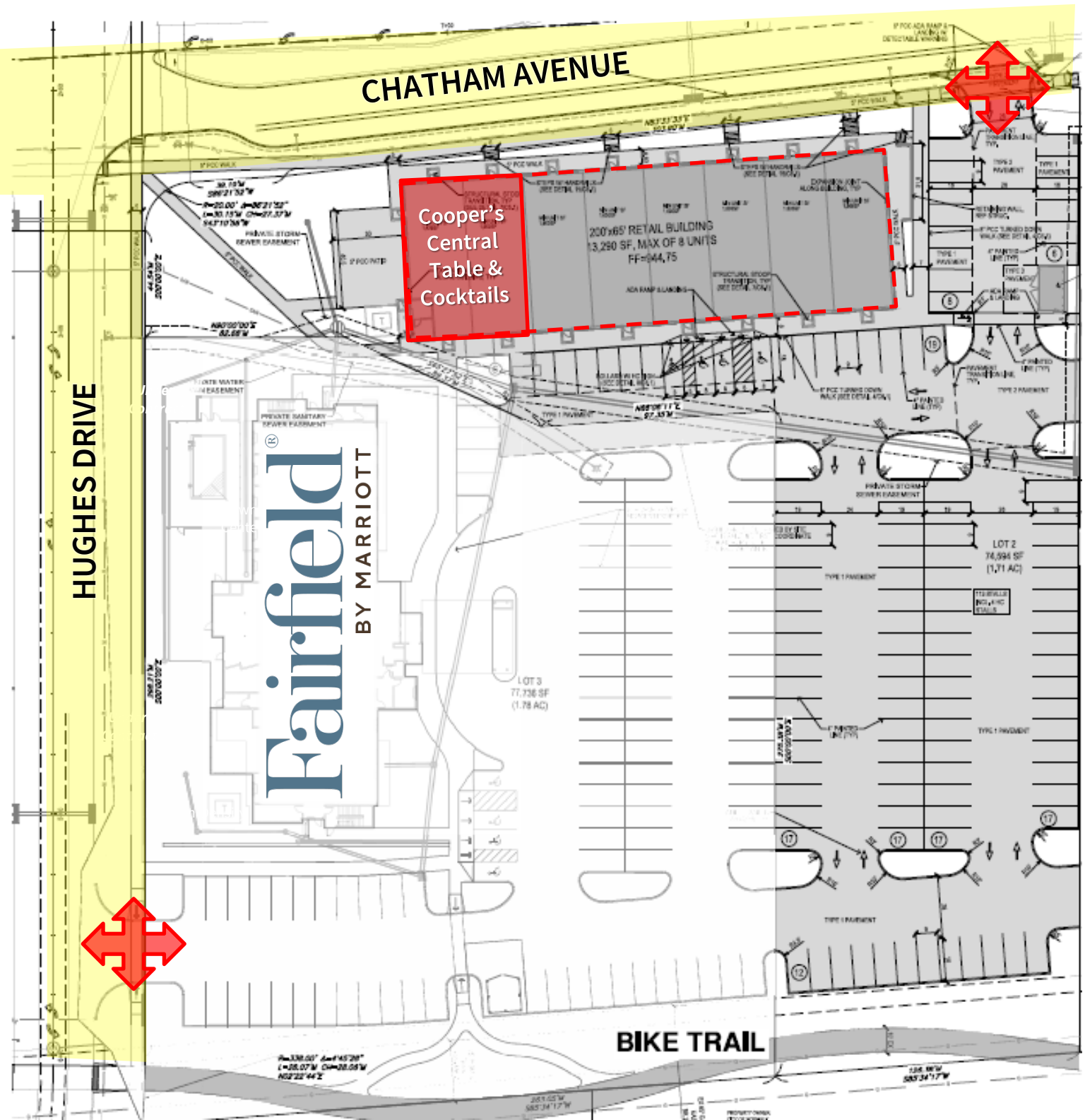
Floor plan



Hughes Century Crossing at Norwalk Central



# Site plan



\*Conceptual building site plan, rendering subject to change.

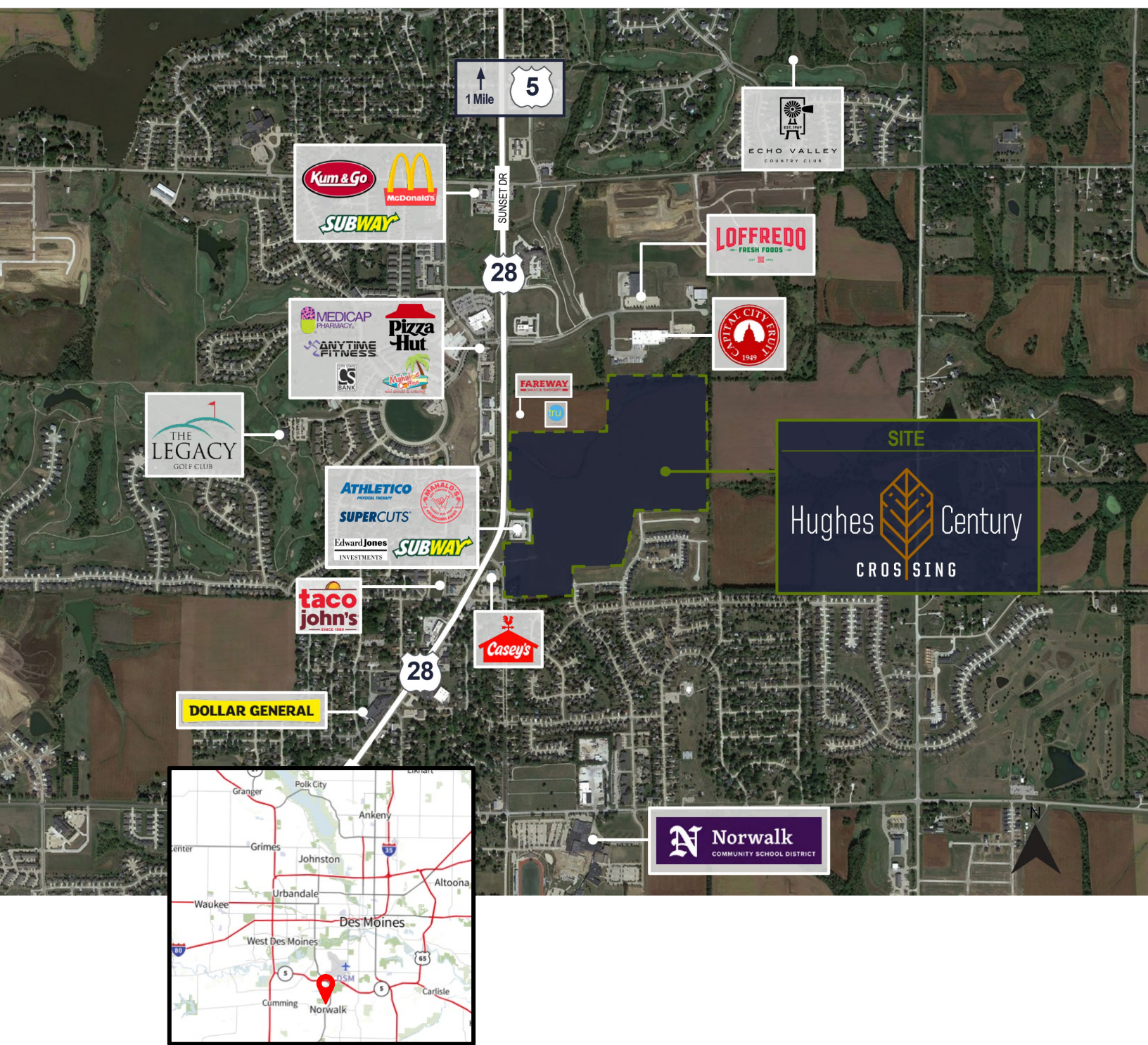
# Hughes Century Crossing at Norwalk Central



## Demographics Norwalk, IA

	1 Mile	3 Miles	5 Miles
Population	6,913	16,287	45,502
Households	2,681	6,146	18,605
Average HH Income	\$91,478	\$86,383	\$69,446

# Norwalk Trade Area



Aaron Hyde  
Senior Vice President  
JLL Des Moines  
+1 515 953 8834  
[aaron.hyde@jll.com](mailto:aaron.hyde@jll.com)

Justin Lossner, CCIM, SIOR  
Senior Managing Director  
JLL Des Moines  
+1 515 371 0846  
[justin.lossner@jll.com](mailto:justin.lossner@jll.com)

The information contained herein has been given to us by the owner of the property or other sources we deem reliable. We have no reason to doubt its accuracy, but we do not guarantee it. All information should be verified prior to purchase or lease. Jones Lang LaSalle Brokerage, Inc. is a licensed broker in the State of Iowa.